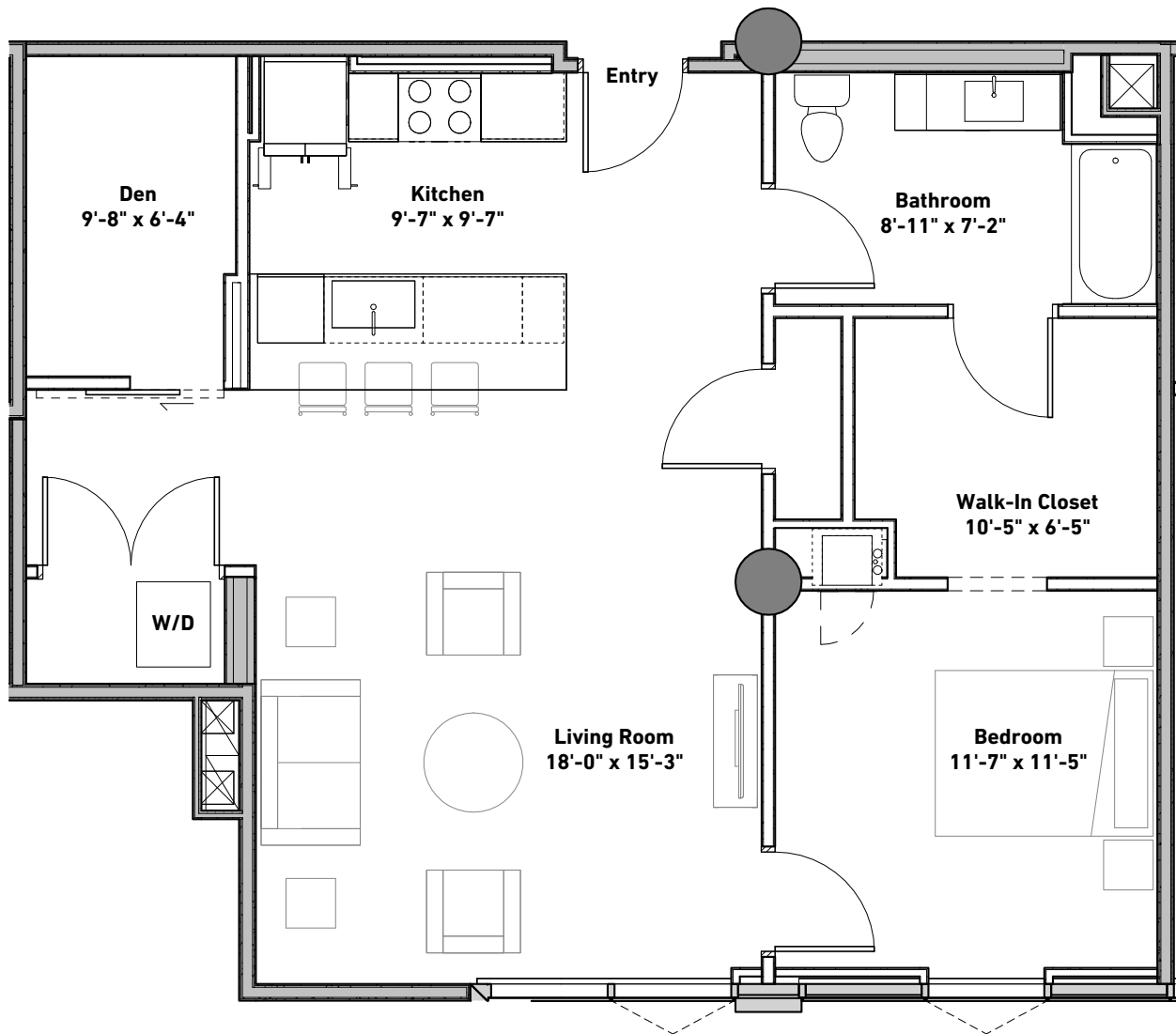


A15

1 BED+DEN

1 BATH

935 SQ FT



SOLVERRE APARTMENTS 4600 N Marine Dr, Chicago, IL 60640

312-601-4600 LiveSolverre.com

FLOORS 3-11

Rent _____ Notes _____



All floor plans are artists renderings for illustrative purposes and may not be to scale. All dimensions and distances are approximate and may vary. All photos and views are approximate representations and may not depict actual product. Not all features are available in every apartment. All specifications, availability, and pricing are subject to change.

